

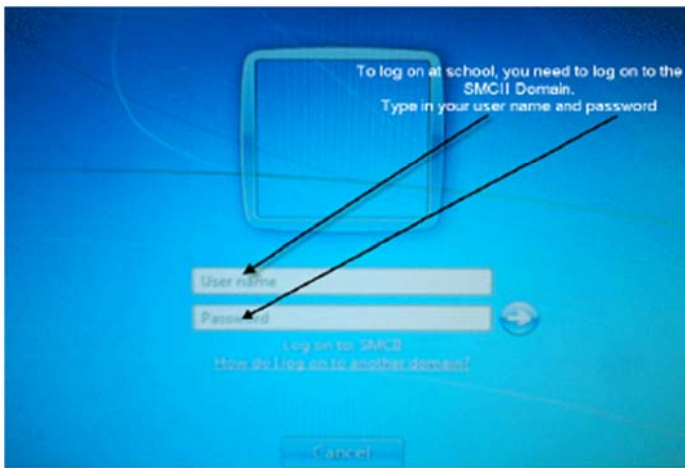
Managing your Netbook

Logging on to your Netbook

Removing Proxy Settings if at Home

1. Logging on at School

- a. Press **ALT + CTRL + DELETE**
- b. Enter your normal **User Name**
- c. Enter your normal **Password**

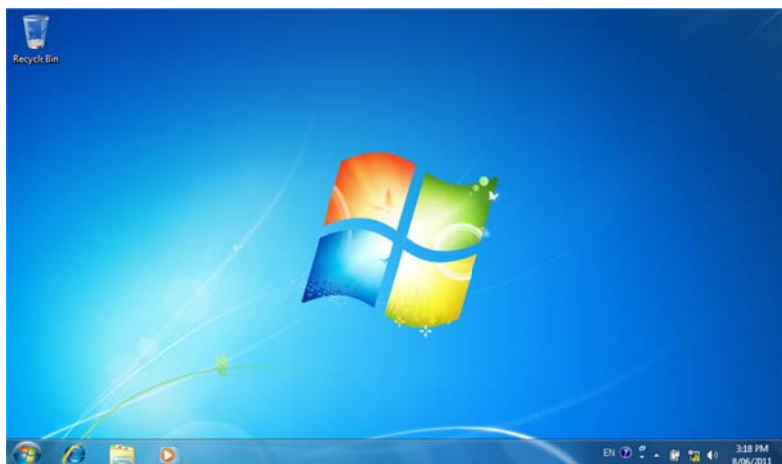


You now have access at School!

PLEASE NOTE: Student accounts no longer exist on the Netbooks.
They have been replaced with the account - **HOME**

2. Logging on to your Netbook at Home

Turn on your Netbook



Managing your Netbook

Logging on to your Netbook

Removing Proxy Settings if at Home

To access the HOME account, please key in the following:

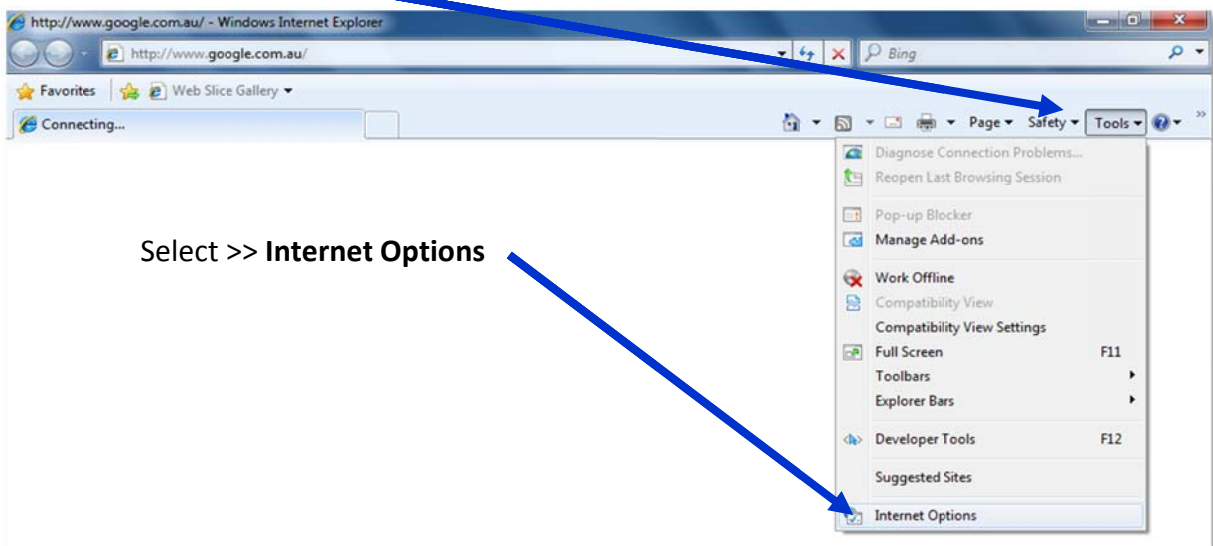
Username **SMC-XXXX\home** *NOTE: Replace XXXX with your Netbook ID*

Password: **home**

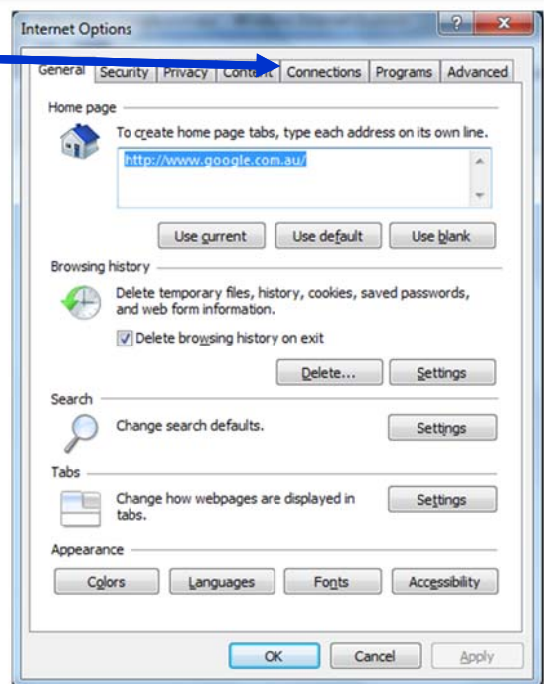
3. Removing Proxy Settings

This example is using Internet Explorer 8

- a. Open your Browser
Select >> **Tools**



- b. Select >> **Connections**

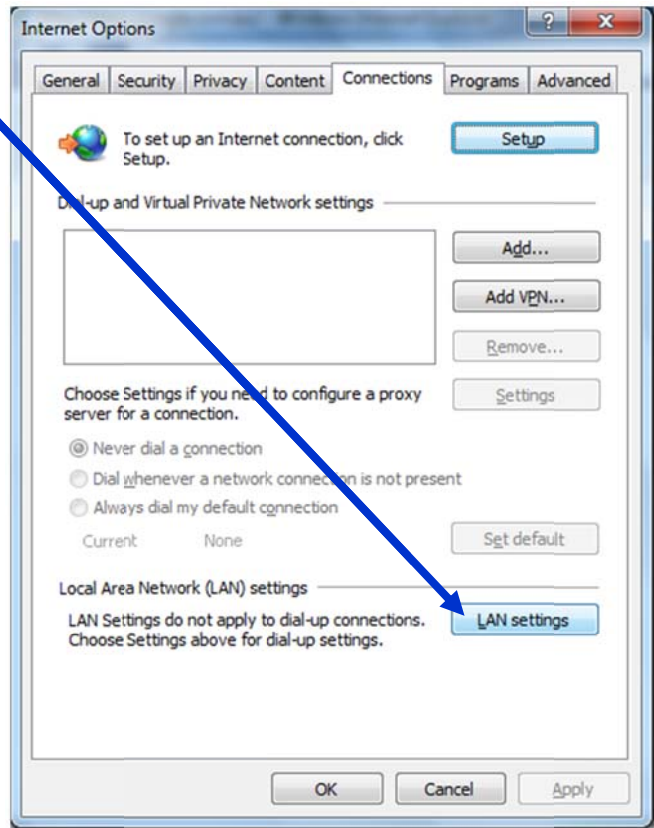


Managing your Netbook

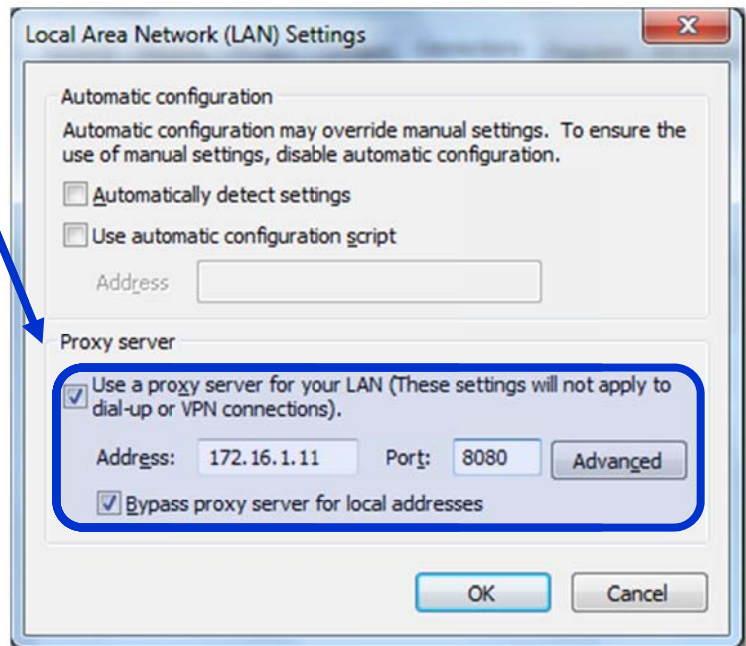
Logging on to your Netbook

Removing Proxy Settings if at Home

c. Select >> **LAN settings**



d. These settings are the Proxy settings for when you are at college only.



Managing your Netbook

Logging on to your Netbook

Removing Proxy Settings if at Home

e. Select >>

Automatically detect settings

and Remove these settings

Select >> **OK**

